

Quick Start

1

Rackmount the SnapStream Enterprise TV Server

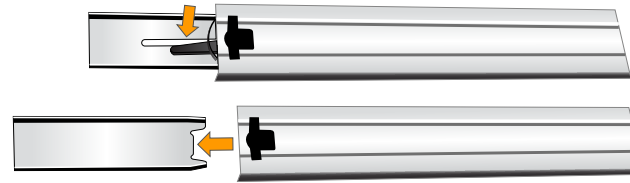
If your SnapStream Enterprise TV Server was provided with rackmount rails, install those rails on server unit and then install the SnapStream Enterprise TV Server in your server rack.

If you have a tower case, proceed to step 2

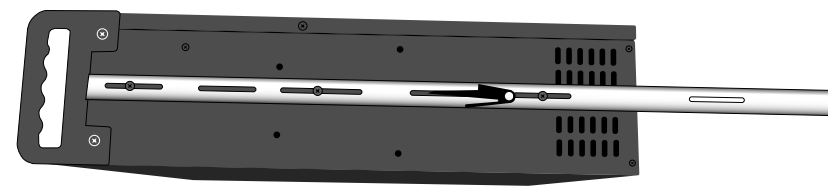
1-1 Pull the center slide out until the rail is fully expanded.



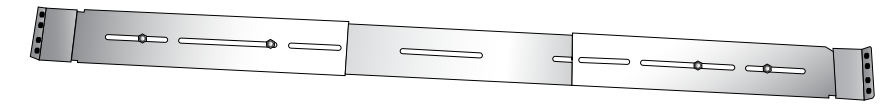
1-2 You will see a black plastic tab where the center slide joins the rest of the rail assembly. Press this tab to the right to release the center slide. Remove the slide from the rail assembly.



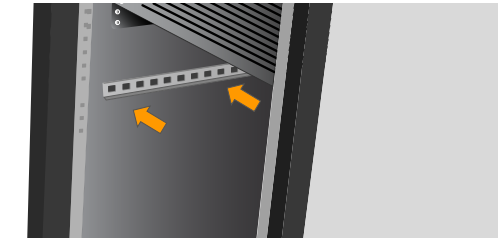
1-3 Attach one center slide to each side of the Enterprise Server using the screws provided and the existing holes in the server chassis. The open ends of the slides should face the rear of the server.



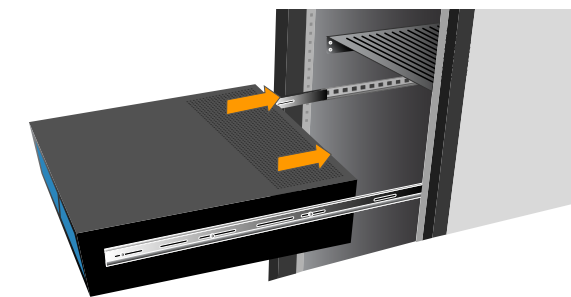
1-4 Attach the rack mounts to either end of the rail assembly using the screws and nuts provided.



1-5 Install the rail assembly in your server rack using the screws provided.



1-6 Carefully lift the server and insert the ends of the center slides into the rail assembly. The server should slide in and out smoothly on the rails.



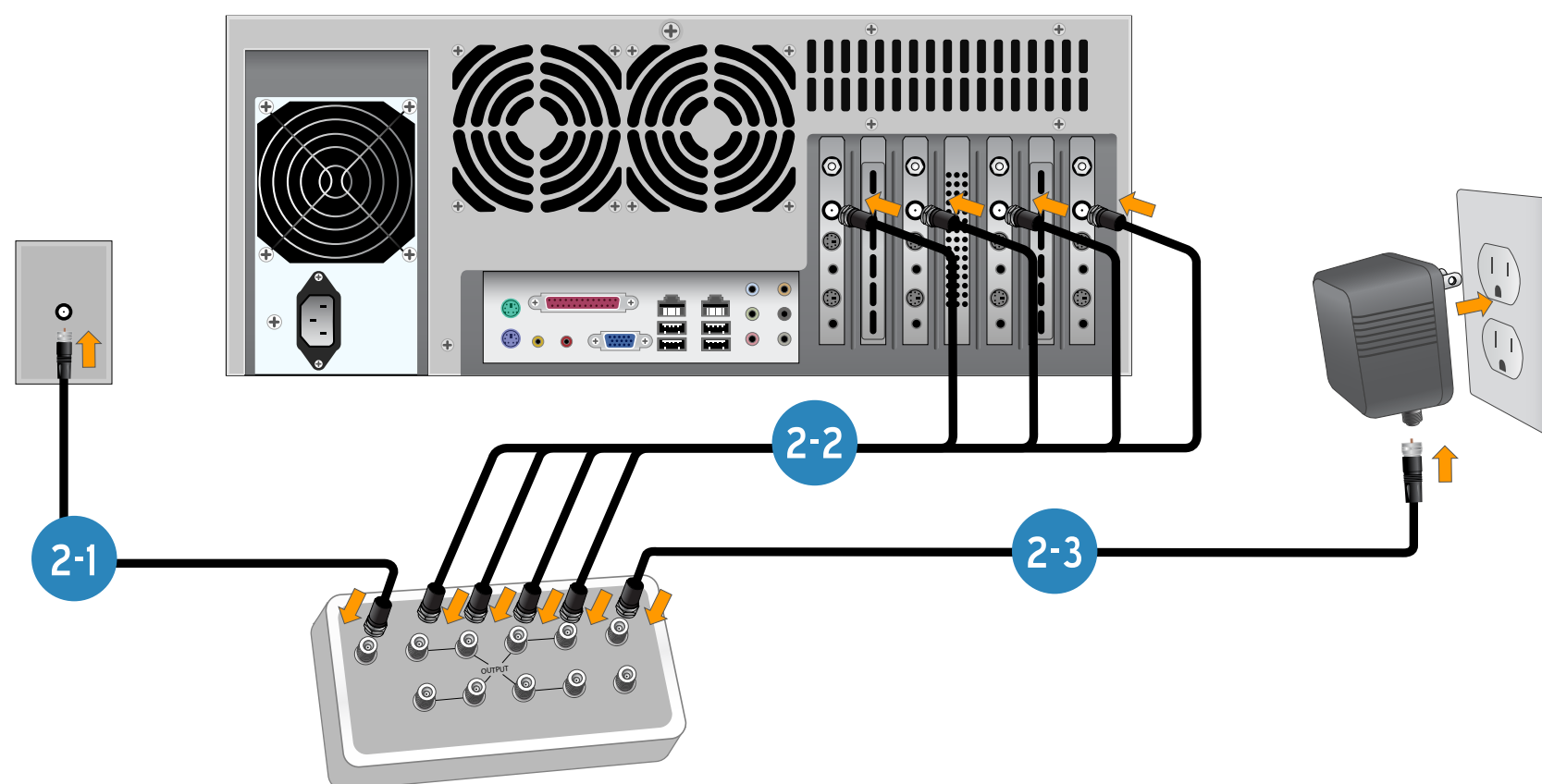
2

Connect TV Source (cable TV or antenna)

Using the included coaxial RF patch cords and amplified splitter, connect your incoming TV source to the SnapStream Enterprise TV Server.

- 2-1 Connect your TV source to the "Cable In" connection on the amplified splitter.
- 2-2 Connect a cable between each TV tuning connection on the Enterprise TV Server and an output port on the amplified splitter.
- 2-3 Connect the DC12V Power input connector on the amplified splitter to a power source.

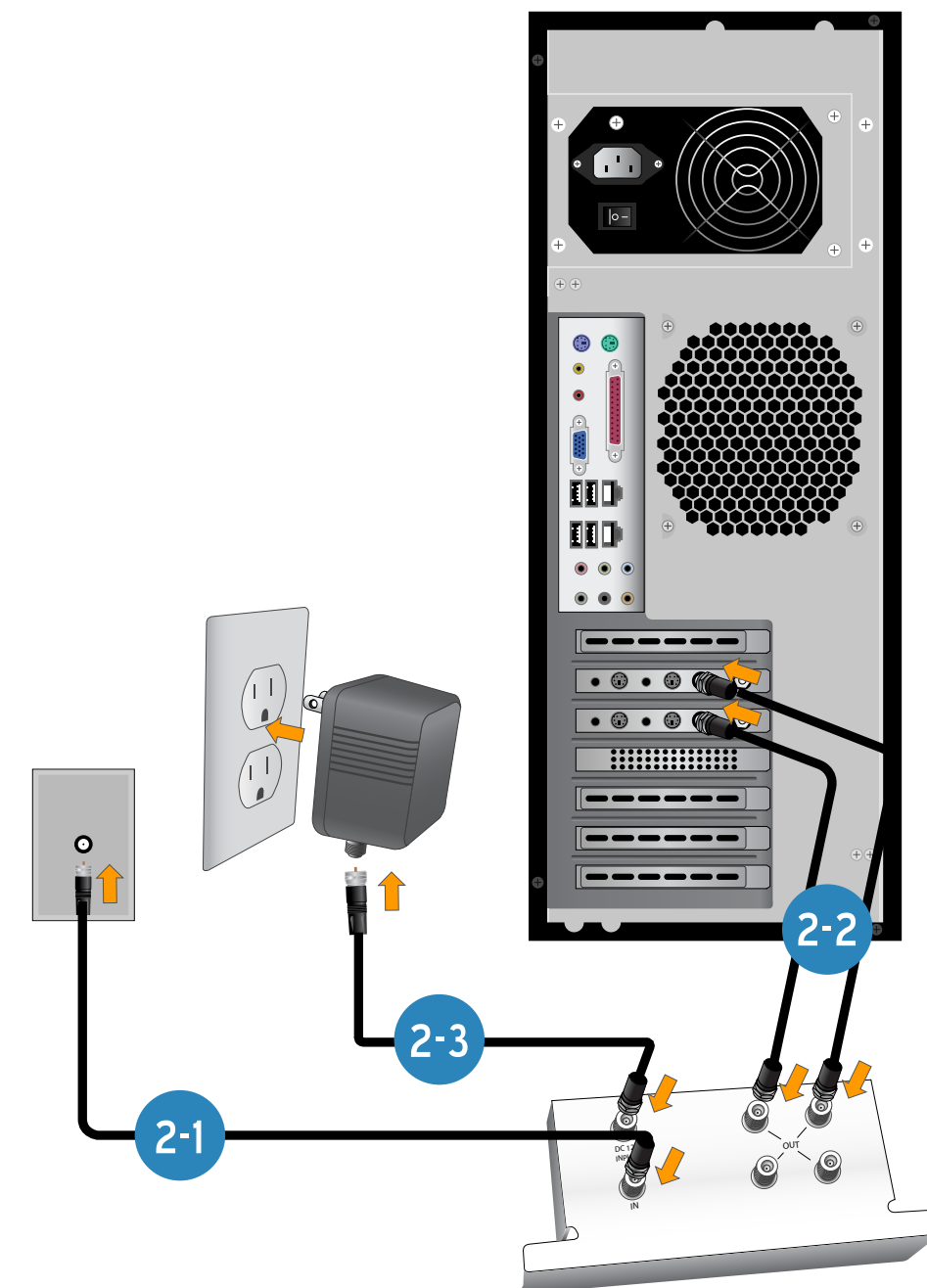
Rackmount Case Setup



Note: Each cable connection provides a signal to two tuners. A 4-tuner server will require 2 connections. An 8-tuner server will require 4 connections, etc.

OR

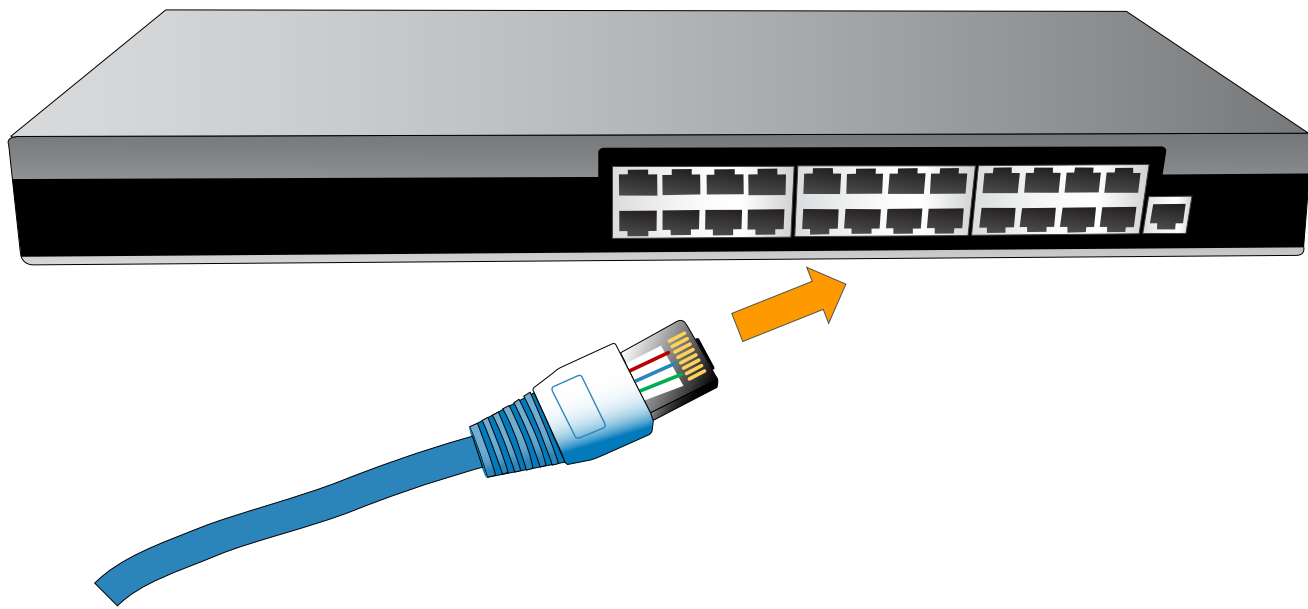
Tower Case Setup



3

Connect Network

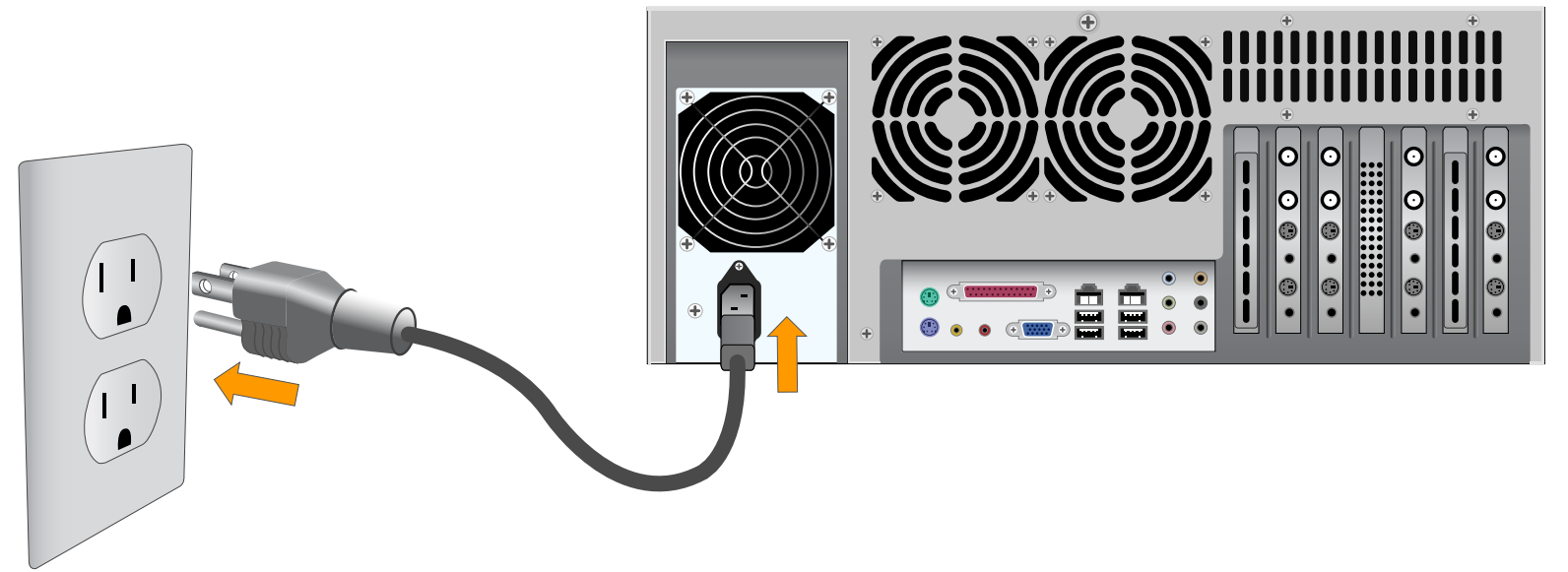
Connect the SnapStream Enterprise TV Server into the appropriate network router or switch using the supplied RJ-45 network cable.



4

Connect Power

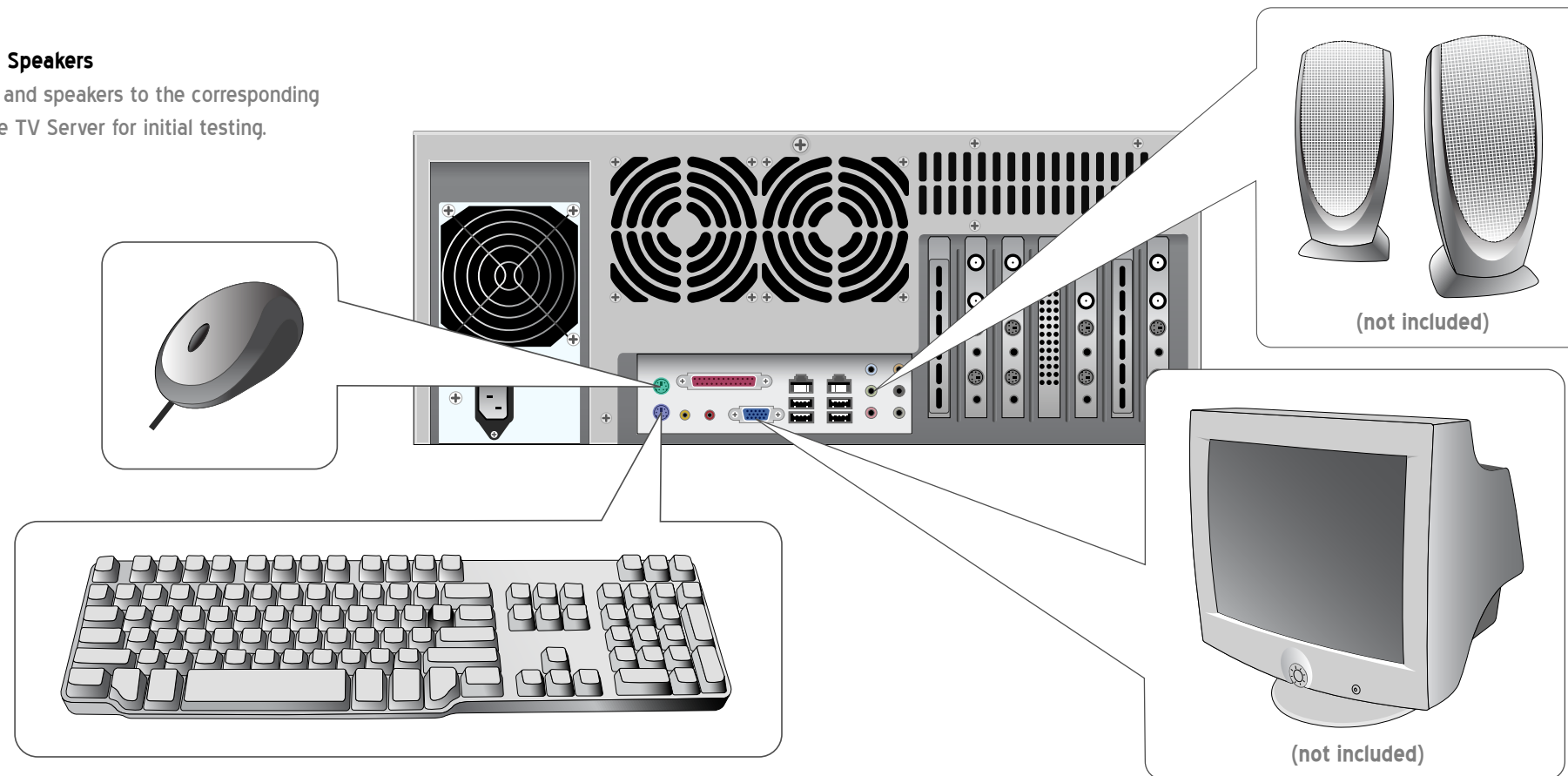
Connect the server's power cable to a 120V power source.



5

Connect Keyboard, Monitor, Mouse and Speakers

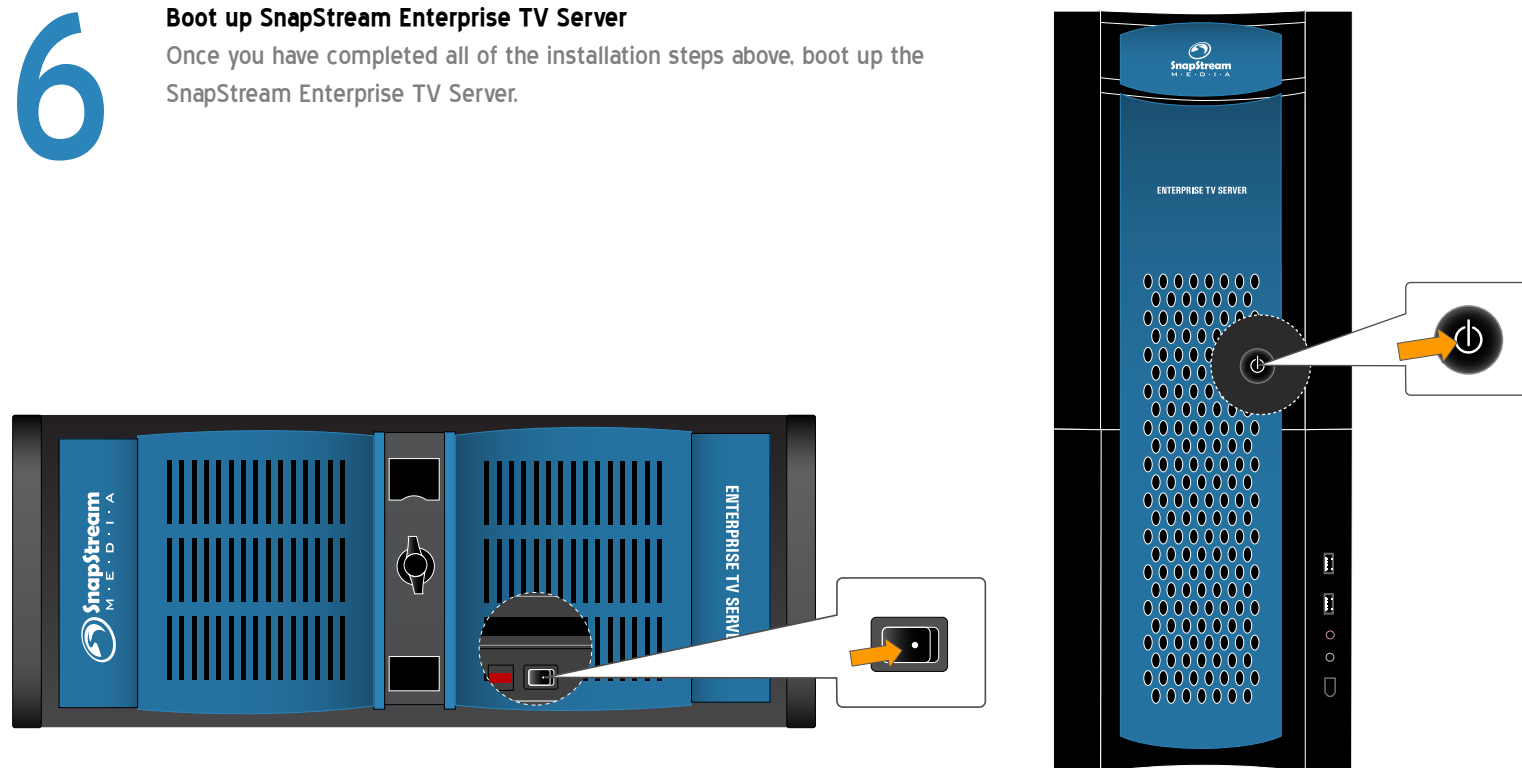
Connect a keyboard, a monitor, a mouse and speakers to the corresponding connectors on the SnapStream Enterprise TV Server for initial testing.



6

Boot up SnapStream Enterprise TV Server

Once you have completed all of the installation steps above, boot up the SnapStream Enterprise TV Server.



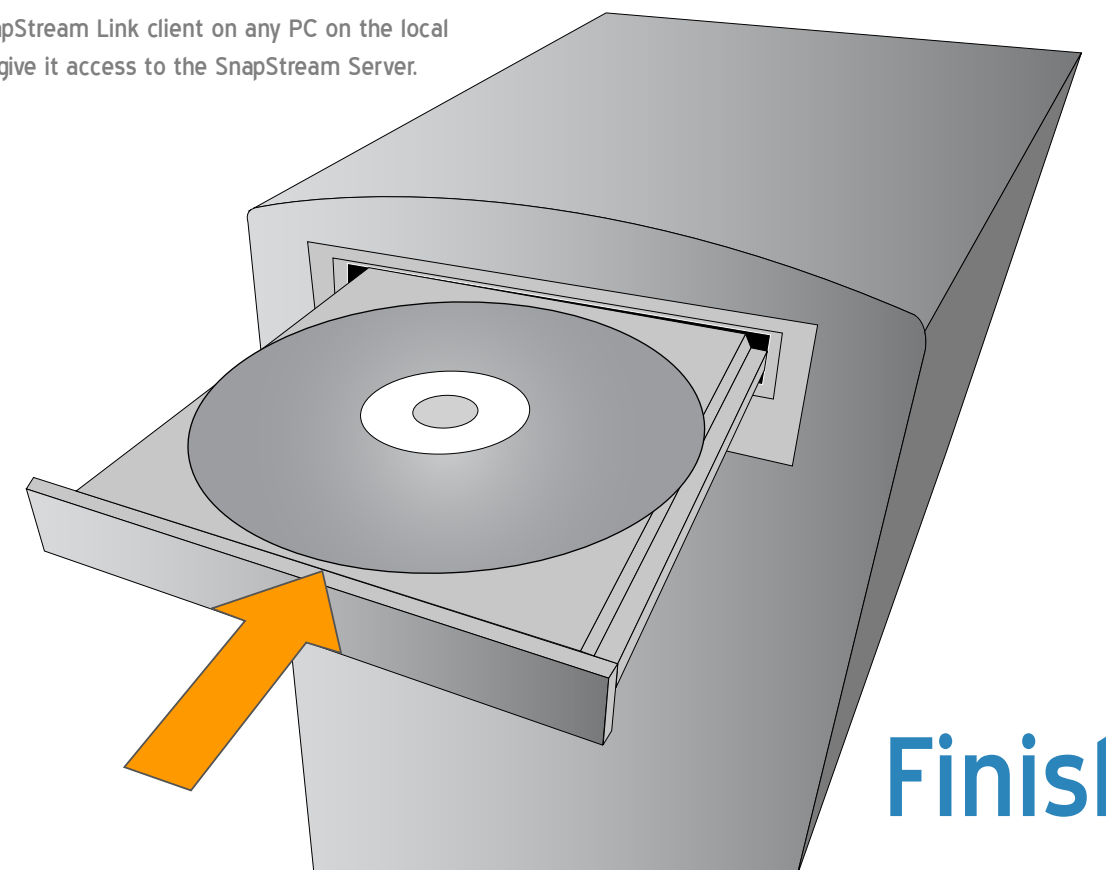
Rackmount Case

Tower Case

7

Install SnapStream Link

Install a SnapStream Link client on any PC on the local network to give it access to the SnapStream Server.



Finished!