

Quick Start

1

Rackmount the SnapStream Enterprise TV Server

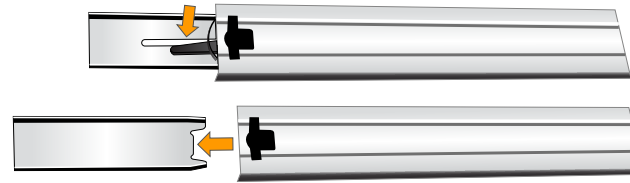
If your SnapStream Enterprise TV Server was provided with rackmount rails, install those rails on server unit and then install the SnapStream Enterprise TV Server in your server rack.

If you have a tower case, proceed to step 2

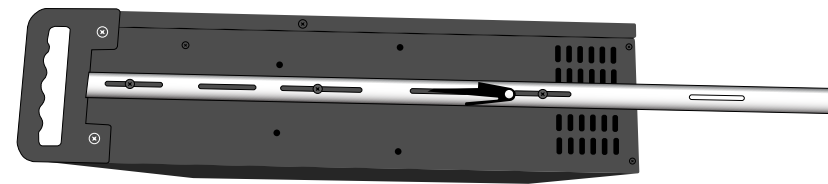
1-1 Pull the center slide out until the rail is fully expanded.



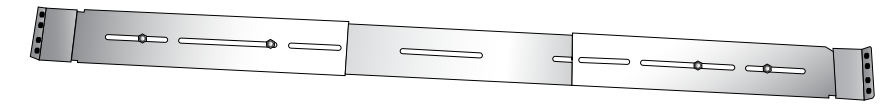
1-2 You will see a black plastic tab where the center slide joins the rest of the rail assembly. Press this tab to the right to release the center slide. Remove the slide from the rail assembly.



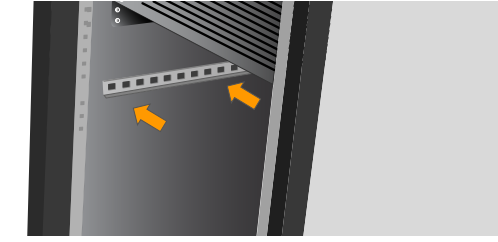
1-3 Attach one center slide to each side of the Enterprise Server using the screws provided and the existing holes in the server chassis. The open ends of the slides should face the rear of the server.



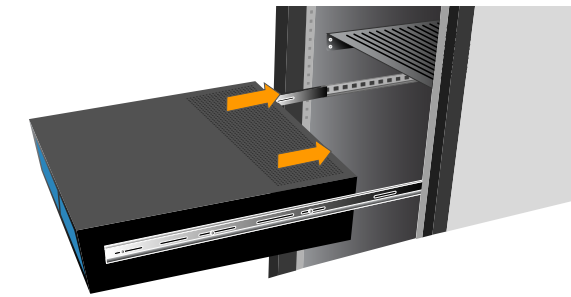
1-4 Attach the rack mounts to either end of the rail assembly using the screws and nuts provided.



1-5 Install the rail assembly in your server rack using the screws provided.



1-6 Carefully lift the server and insert the ends of the center slides into the rail assembly. The server should slide in and out smoothly on the rails.



2

Connect TV Source (digital cable or satellite)

Using the included cables, connect your incoming TV source to the SnapStream Enterprise TV Server.

2-1 If a USB hub is provided, connect it to the labeled USB port on the back of the Enterprise Server.

2-2 Label each of your set-top boxes (STBs) with a number: 1, 2, 3, 4, etc.

The following steps will be repeated for all STBs in pairs, beginning with 1 and 2.

2-3 Connect the USB-UIRT labeled "1&2" to one of the USB ports on the back of the Enterprise Server.

OR
Connect the USB-UIRT labeled "1&2" to the first port on the USB hub.

2-4 Connect the Y-connector labeled "1&2" to the USB-UIRT.

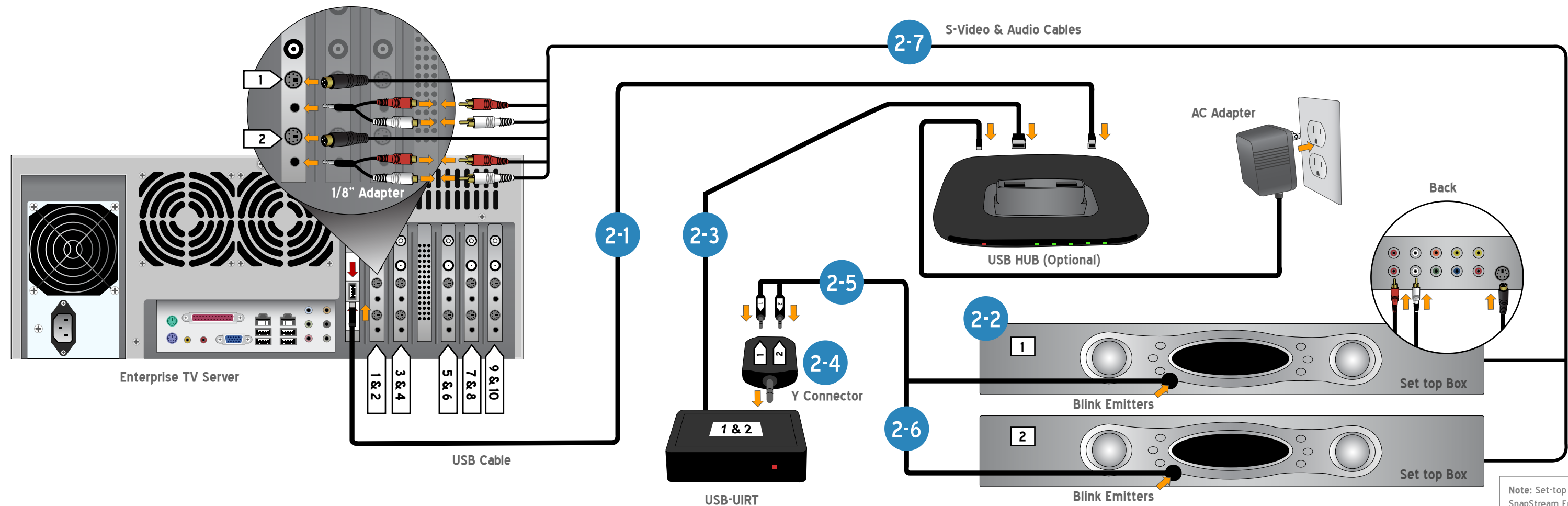
2-5 Connect blink emitters to jacks 1 and 2 on the Y-connector.

2-6 Attach each blink emitter to the STB with the same number as the jack on the Y-connector. Stick the blink emitter on to the box near the IR port. The emitter does not need to be on top of the IR port.

2-7 Use the labeled S-video/audio cable and one RCA-to-1/8" adapter to connect each STB to the corresponding input of the Enterprise Server's tuner cards. **IMPORTANT:** For each STB, the following numbers should match:

- The number on the jack to which the blink emitter is connected.
- The number on the STB.
- The number on the S-Video cable.
- The number of the tuner card input.

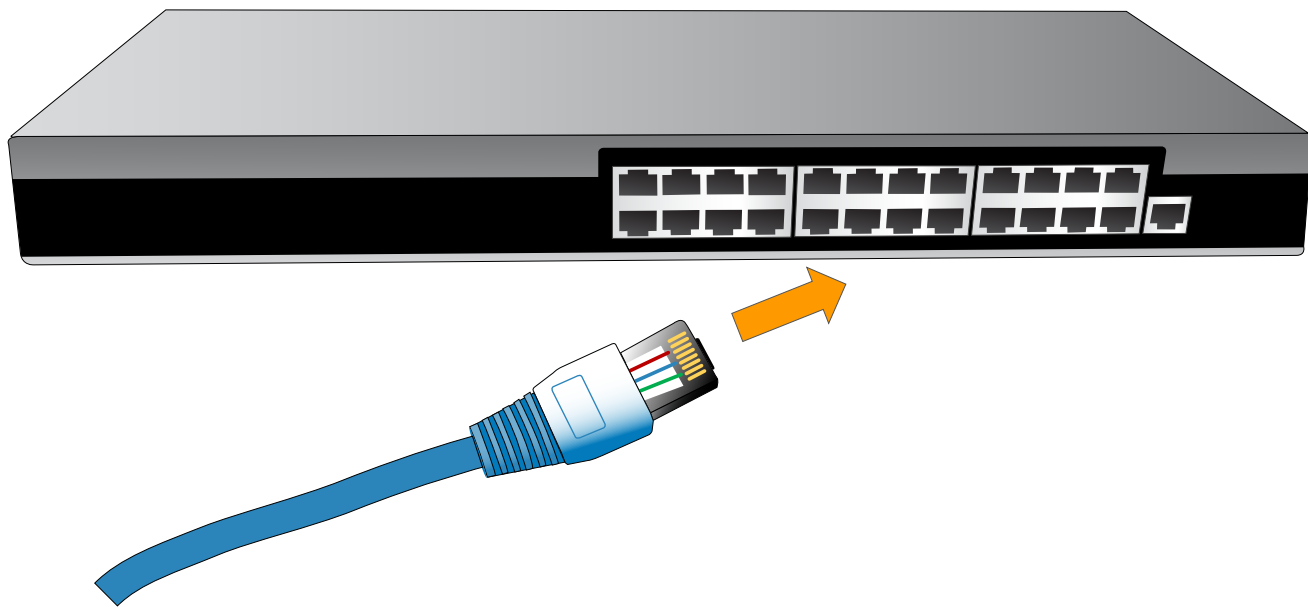
2-8 Repeat steps 2-3 through 2-7 for all remaining pairs of STBs.



3

Connect Network

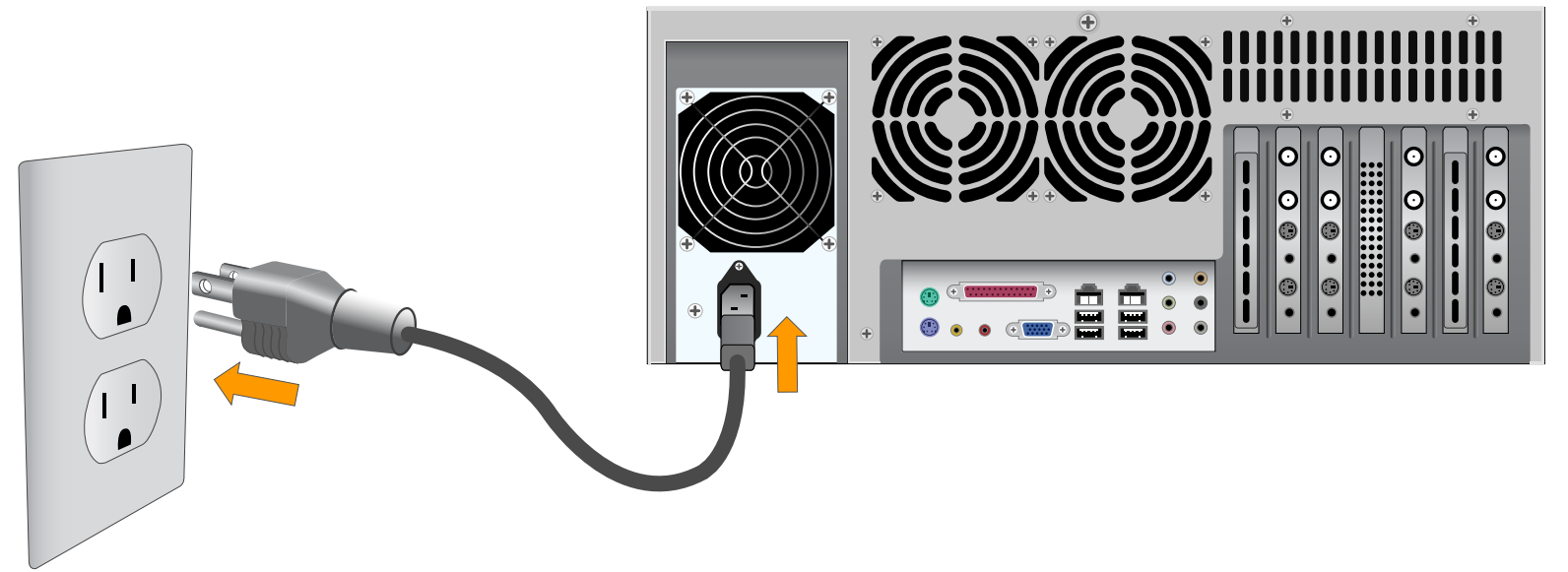
Connect the SnapStream Enterprise TV Server into the appropriate network router or switch using the supplied RJ-45 network cable.



4

Connect Power

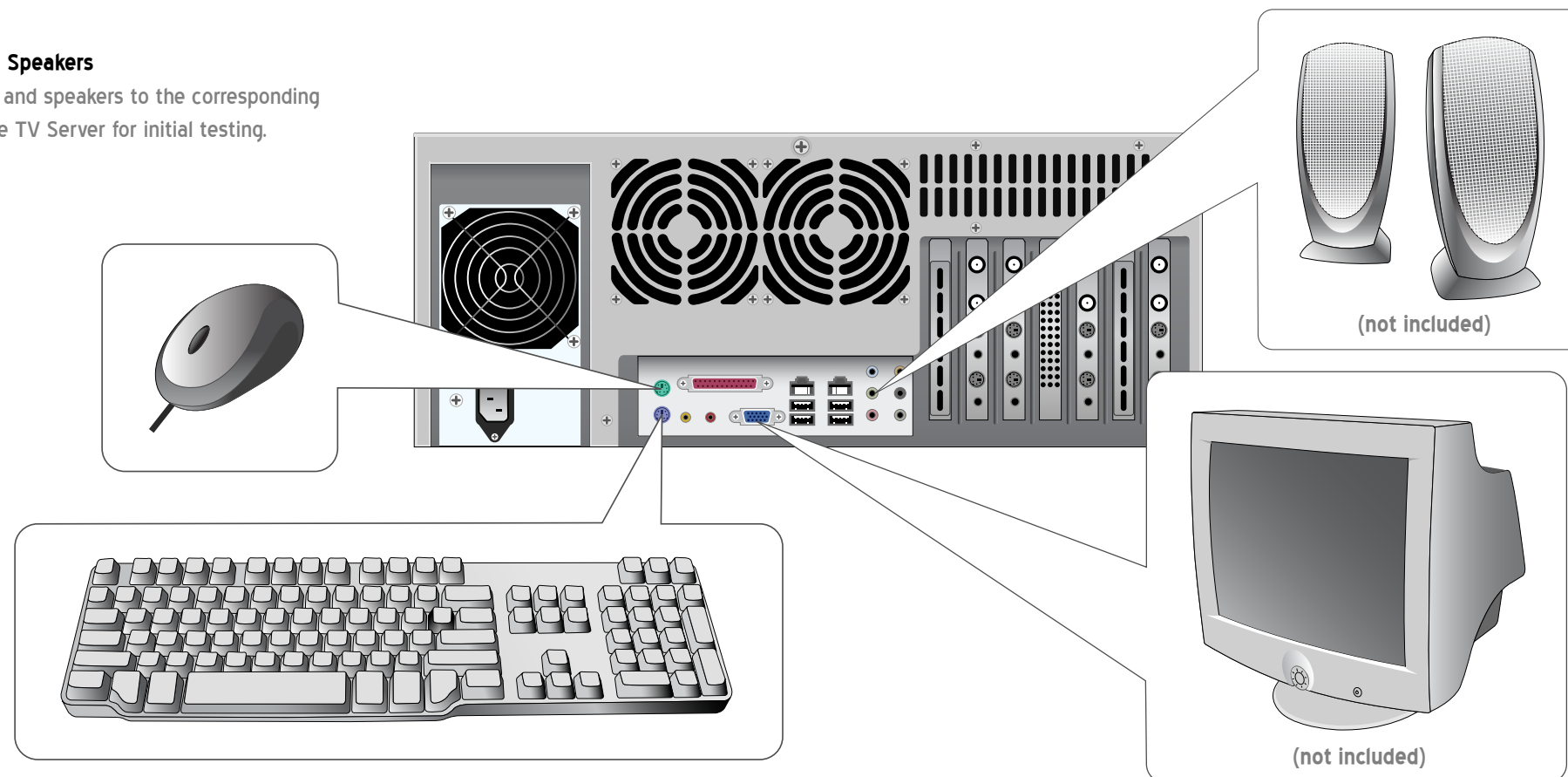
Connect the server's power cable to a 120V power source.



5

Connect Keyboard, Monitor, Mouse and Speakers

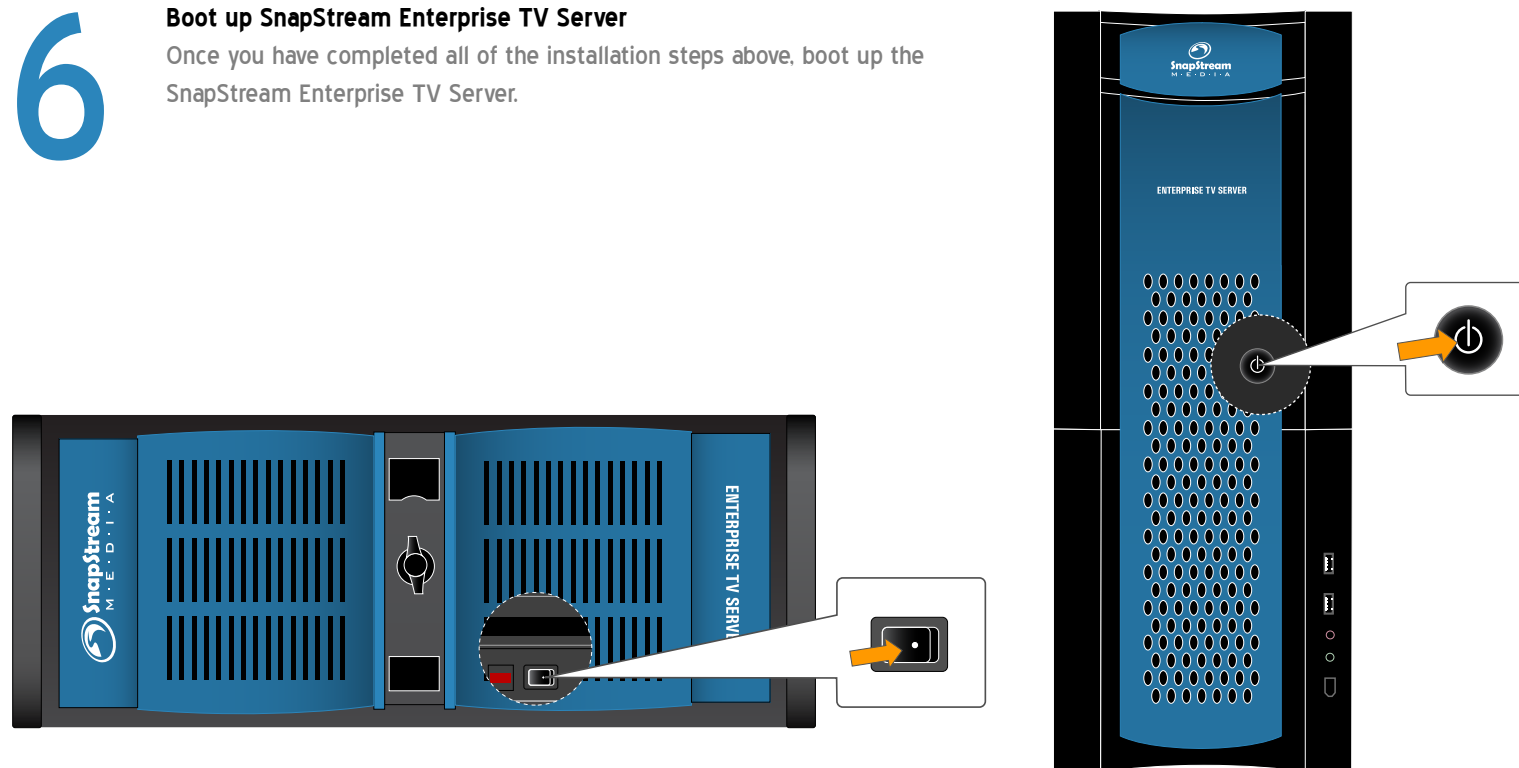
Connect a keyboard, a monitor, a mouse and speakers to the corresponding connectors on the SnapStream Enterprise TV Server for initial testing.



6

Boot up SnapStream Enterprise TV Server

Once you have completed all of the installation steps above, boot up the SnapStream Enterprise TV Server.



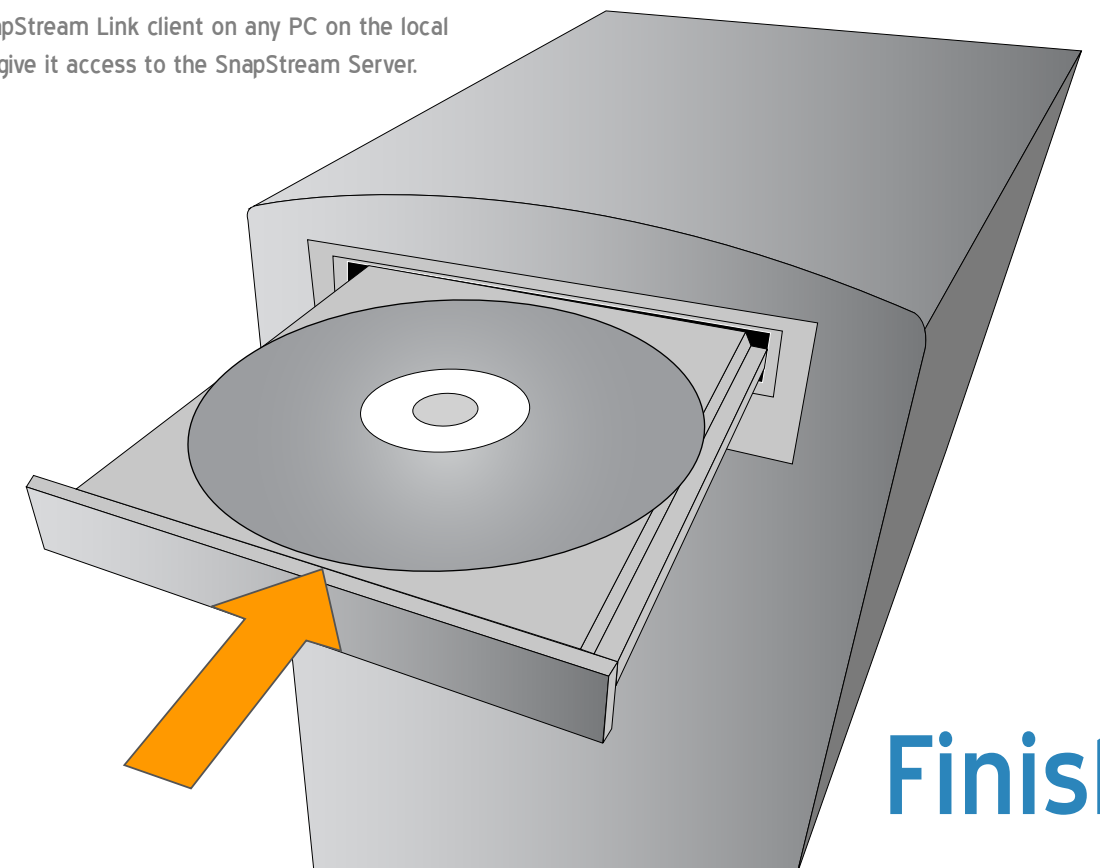
Rackmount Case

Tower Case

7

Install SnapStream Link

Install a SnapStream Link client on any PC on the local network to give it access to the SnapStream Server.



Finished!